

# Clozapine Interaction with Phosphatidyl Inositol 3-Kinase (PI3K)/Insulin-Signaling Pathway in *Caenorhabditis elegans*

Rakesh Karmacharya<sup>1,2,3</sup>, Gregory R Sliwoski<sup>2</sup>, Miriam Y Lundy<sup>2</sup>, Raymond F Suckow<sup>4</sup>, Bruce M Cohen<sup>1,2</sup> and Edgar A Buttner<sup>\*,1,2</sup>

<sup>1</sup>Department of Psychiatry, Harvard Medical School, Boston, MA, USA; <sup>2</sup>Mailman Research Center, McLean Hospital, Belmont, MA, USA;

<sup>3</sup>Chemical Biology Program, Broad Institute of Harvard and MIT, Cambridge, MA, USA; <sup>4</sup>Department of Analytical Psychopharmacology, New York State Psychiatric Institute, New York, NY, USA

Clozapine has superior and unique effects as an antipsychotic agent, but the mediators of these effects are not known. We studied behavioral and developmental effects of clozapine in *Caenorhabditis elegans*, as a model system to identify previously undiscovered mechanisms of drug action. Clozapine induced early larval arrest, a phenotype that was also seen with the clozapine metabolite *N*-desmethyl clozapine but not with any other typical or atypical antipsychotic drug tested. Mutations in the insulin receptor/*daf-2* and phosphatidyl inositol 3-kinase (PI3K)/*age-1* suppressed clozapine-induced larval arrest, suggesting that clozapine may activate the insulin-signaling pathway. Consistent with this notion, clozapine also increased the expression of an *age-1::GFP* reporter. Activation of the insulin-signaling pathway leads to cytoplasmic localization of the fork head transcription factor FOXO/*daf-16*. Clozapine produced cytoplasmic localization of DAF-16::GFP in arrested L1 larvae, in contrast to stressors such as starvation or high temperature, which produce nuclear localization of DAF-16::GFP in arrested L1 larvae. Clozapine also inhibited pharyngeal pumping in *C. elegans*, an effect that may contribute to, but did not explain, clozapine-induced larval arrest. Our findings demonstrate a drug-specific interaction between clozapine and the PI3K/insulin-signaling pathway in *C. elegans*. As this pathway is conserved across species, the results may have implications for understanding the unique effects of clozapine in humans.

*Neuropsychopharmacology* (2009) **34**, 1968–1978; doi:10.1038/npp.2009.35; published online 25 March 2009

**Keywords:** clozapine; PI3K; AGE-1; DAF-2; insulin signaling; schizophrenia

## INTRODUCTION

The treatment of patients with schizophrenia has been hindered by the limited efficacy of currently available antipsychotic medications and the frequent and disabling side effects produced by these drugs (Freedman, 2005; Lieberman *et al*, 2005). Development of improved treatments has been slowed by a poor understanding both of the pathophysiology of psychosis and the mechanisms of action of current medications (Carpenter and Koenig, 2008). Although antagonism of monoamine receptors is a shared property of antipsychotic agents, the drugs vary greatly in relative potency at these receptors, and it is not known how actions at these common targets mediate each drug's specific clinical effects (Arnt and Skarsfeldt, 1998; Gardner *et al*, 2005).

Clozapine stands out among the antipsychotic medications for its superior efficacy in treatment-refractory schizophrenia and its production of minimal extrapyramidal symptoms (Kane *et al*, 1988; Kumra *et al*, 2008). More than other antipsychotics, clozapine has been shown to reduce negative symptoms and to ameliorate cognitive deficits in patients with schizophrenia (Brar *et al*, 1997; Lindenmayer *et al*, 1998; Meltzer and McGurk, 1999). The use of clozapine is limited by its occasional production of agranulocytosis, a complication that requires frequent monitoring of white blood cells (Krupp and Barnes, 1992). In addition, there is a significant drug-related incidence of new-onset diabetes mellitus, as well as dyslipidemia and weight gain (Lamberti *et al*, 2006). The molecular basis of both clozapine's unique superior efficacy and its side effects are unknown, although various mechanisms have been proposed (Brunello *et al*, 1995).

*C. elegans* provides a versatile system that can be used to identify targets and pathways affected by psychoactive drugs (Weinshenker *et al*, 1996; Bettinger *et al*, 2004). There are many genetic pathways originally characterized in *C. elegans* that have generalized to mammalian biology, such as the control of vulval development by the ras pathway (Horvitz and Sternberg, 1991), control of apoptosis

\*Correspondence: Dr EA Buttner, Department of Psychiatry, Mailman Research Center, McLean Hospital, 115 Mill Street, Belmont, MA 02478, USA, Tel: +617 855 2074, Fax: +617 876 5148, E-mail: nbuttner@gmail.com

Received 6 November 2008; revised 2 February 2009; accepted 18 February 2009

by the programmed cell death pathway (Hengartner and Horvitz, 1994), RNA interference (Fire *et al*, 1998), and the control of development by microRNAs (Ambros, 2001; Ruvkun, 2001). Many gene systems of interest in the study of psychiatric neurobiology are conserved between *C. elegans* and mammals, such as neurotransmitter receptors, including G-protein-coupled receptors and ligand-gated channels, second-messenger systems, many ion channels, synaptic proteins, and enzymes involved in neurotransmitter biosynthesis and metabolism (Bargmann, 1998). Large-scale genetic screens in invertebrates allow identification of genetic targets without prior knowledge of the role of such targets, an approach not possible in mouse models (Riddle *et al*, 1997; Sieburth *et al*, 2005). Human homologs of *C. elegans* genes may point to biological mechanisms that provide insight into clinically relevant mechanisms in humans. For example, studies of development and programmed cell death in *C. elegans* have led to the identification of genes that are conserved in mammals, and that, when mutated, cause neurodegenerative disease and cancer in humans (Horvitz, 1999).

We undertook a study in *C. elegans* to identify novel mechanisms underlying the effects of clozapine. Similar studies in *C. elegans* have led to the identification of novel targets of psychoactive agents such as the antidepressant fluoxetine (Choy and Thomas, 1999; Choy *et al*, 2006) as well as the identification of the calcium-activated large conductance BK potassium channel as a target of ethanol (Davies *et al*, 2003). We observed a clozapine-specific developmental phenotype resulting in early larval arrest. We report that *age-1* mutants suppress clozapine-induced larval arrest, indicating interactions between clozapine and the PI-3 kinase (PI3K)/insulin-signaling pathway. This pathway mediates a diverse array of biological processes in *C. elegans*, such as metabolism, growth, and longevity. The pathway, which is well-conserved between *C. elegans* and humans, includes homologs of the insulin receptor/*daf-2*, PI3K/*age-1*, the serine-threonine kinases Akt/*akt-1* and *akt-2* and PDK1/*pdk-1*, and the fork head transcription factor FOXO/*daf-16*. DAF-16 is a major target of the pathway and is antagonized by activation of DAF-2 (Paradis and Ruvkun, 1998; Pierce *et al*, 2001).

## MATERIALS AND METHODS

*C. elegans* strains were obtained from the *Caenorhabditis* Genetics Center (CGC) in Minneapolis, MN. Experiments were conducted with the *C. elegans* Bristol strain N2 as the wild-type parent of our mutant strains. Nematodes were grown under standard culture conditions at 20°C. The following strains were used: CB1112 *cat-2(e1112)*, MT7988 *bas-1(ad446)*, MT9455 *tph-1(n3722)*, GR1321 *tph-1(mg280)*, CB1141 *cat-4(e1141)*, JT603 *gpl-2(sa603)*, JT734 *goa-1(sa734)*, MT2605 *unc-43(n498n1186)*, TJ1052 *age-1(hx546)*, TJ412 *age-1(hx542)*; *fer-15(b26)*, CB1370 *daf-2(e1370)*, DR1564 *daf-2(m41)*, DR1567 *daf-2(m577)*, DR1568 *daf-2(e1371)*, GR1318 *pdk-1(mg142)*, JT709 *pdk-1(sa709)*, JT9609 *pdk-1(sa680)*, DR26 *daf-16(m26)*, CZ1197 *Punc-25::GFP(juIs73)*, TJ356 *zIs356[DAF-16::GFP]*, BC10837 [*dpy-5(e907); sEx10837(age-1::GFP)*] (McKay *et al*, 2003), FK229 *egl-4(ks61)*, DA695 *egl-19(ad695)*, PR678

*tax-4(p678)*, PR694 *tax-2(p694)*, DR2281 *daf-9(m540)*, DR47 *daf-11(m47)*, DR62 *daf-7(m63)*, DR63 *daf-4(m63)*. The *sEx10837(age-1::GFP)* array was integrated in the following manner: 100 animals were irradiated with X-ray on 20 medium plates, allowed to starve and transferred to fresh plates and scored for presence of fluorescence in the progeny. The *tph-1* mutant allele *n3722* and *tph-1* mutant allele *mg280* were gifts from Dr Mark Alkema (University of Massachusetts, Worcester, MA). We obtained clozapine, perphenazine, and haloperidol from Sigma-Aldrich, *N*-desmethyl clozapine from Tocris, and olanzapine from Waterstone Technology. Nematodes were grown and studied under standard culture conditions at 20°C unless otherwise noted.

## Larval Arrest

Drug plates were prepared by pipetting 100 µl of stock solution in 100% ethanol onto the agar surrounding the bacterial lawn. 10 gravid adults were placed in two seeded Nematode Growth Medium (NGM) plates each with 1% ethanol and either 200 µg/ml clozapine, 50 µg/ml haloperidol, or 100 µg/ml olanzapine. Gravid adults were removed after 24 h. Numbers of nematodes in different stages were counted every day. The smallest larvae on the plates were counted as L1 whereas larger larvae that lacked a pre-vulva space were scored as L2. L3 larvae were scored using the following identifying factors: they are larger than L2, they have a pre-vulval space, and they exhibit much greater locomotion than L1 or L2 larvae. Dead worms and unhatched eggs were not counted. To examine the effects of clozapine on different larval stages, freshly laid eggs from gravid adults were incubated at 20°C. Larvae of different stages (L1, L2, L3, and L4) were picked at specific time intervals corresponding to the developmental stage at 20°C and placed on fresh plates containing 200 µg/ml clozapine. Plates were incubated at 20°C and worms of different larval stages counted for the next 12 days or until all worms had reached adulthood.

## Measurement of Tissue Clozapine Level

Eggs from bleached worms were washed and placed on 20 medium NGM plates containing 200 µg/ml of clozapine. After 48 h at 20°C, arrested larvae were collected. They were washed and resuspended in 1 ml of M9 buffer and subjected to four freeze-thaws. This solution was vortex-mixed and an aliquot immediately sampled for analysis. The homogenate was extracted by liquid-liquid extraction followed by back extraction of the organic phase into phosphate buffer and an aliquot of this aqueous extract was directly injected into the HPLC system. Clozapine and *N*-desmethyl clozapine levels were determined through HPLC with UV detection.

## Dose Response

Experiments were set up with two plates per condition and 10 adults per plate on day 1. Concentrations of drugs used were in the following range: 50–200 µg/ml for clozapine and *N*-desmethyl clozapine, 10–50 µg/ml for haloperidol, and 10–100 µg/ml for olanzapine. Plates were scored on days 3,

6, 9, and 12. Any plate that had grown beyond one generation was no longer scored.

### DAF-16 Localization

Adult TJ356 worms containing the integrated *daf-16::gfp* marker *zIs356* were placed on plates with 200  $\mu$ g/ml clozapine or 1% ethanol and removed after 24 h. After another 48 h at 20°C, the arrested larvae were put on slides using tricaine and tetramisol to anesthetize them and worms were scored for nuclear localization of GFP. To obtain starved larvae, eggs from bleached worms were placed on plates without food. The hatched starved larvae were collected after 48 h and put on slides using tricaine and tetramisol to anesthetize them. For all three conditions, worms were scored within 5 min of being put on the slide, because paralysis induced DAF-16 nuclear localization after 20 min in control worms. Photographs were taken with an Axio Image A1 microscope and an AxioCAM MRM camera.

### Pharyngeal Pumping

Adult worms were placed overnight on plates with 1% ethanol or 200  $\mu$ g/ml clozapine and removed the following morning. Pharyngeal pumping of the hatched larvae was scored. Five larvae at a time were transferred from each plate onto fresh plates with abundant food lacking any drugs or alcohol. The worms were allowed to settle for 5 min and the number of pumps was counted during a 30-s time frame. Only worms on the bacterial lawn were scored.

### Induction Studies

For the *age-1::GFP* worms, the heterozygotes are wild-type and the worms missing the array are dumpy. So, only the wild-type adults were chosen. Ten adult worms were placed on three plates each of 1% ethanol and 200  $\mu$ g/ml clozapine and removed after 18 h. After six hours, hatched worms were put on slides using tricaine and tetramisol to anesthetize them and GFP expression was scored. The number of GFP-positive cells in the intestine was then scored. GFP expression was noted for each section as being none, dull, moderate, or bright.

## RESULTS

### Clozapine Induces Early Larval Arrest in *C. elegans*

We allowed adult worms to lay eggs on plates containing clozapine, the typical antipsychotics haloperidol and perphenazine, or the atypical antipsychotic olanzapine, which is structurally related to clozapine. We then studied the development of hatched larvae over time. The presence

of the vehicle, 1% ethanol alone, slowed the development of control animals slightly, as expected (Figure 1h) (Lee and McIntire, 2006; Davis *et al.*, 2008). Wild-type worms in the presence of 1% ethanol took 4 days to reach adulthood from the time the eggs were laid. Worms exposed to haloperidol, perphenazine and olanzapine progressed through development to adulthood with a very slight delay, taking 4–5 days to reach adulthood (Figure 1a, d, e, f, and h). Besides this delay, no other changes were observed in the growth cycle. However, newly hatched larvae exposed to clozapine did not develop beyond the early larval stages even after 2 weeks (Figure 1b and h). Worms arrested in the presence of clozapine were primarily in the L1 stage with only 18% of arrested worms reaching the L2 stage and no worms of later stages were present.

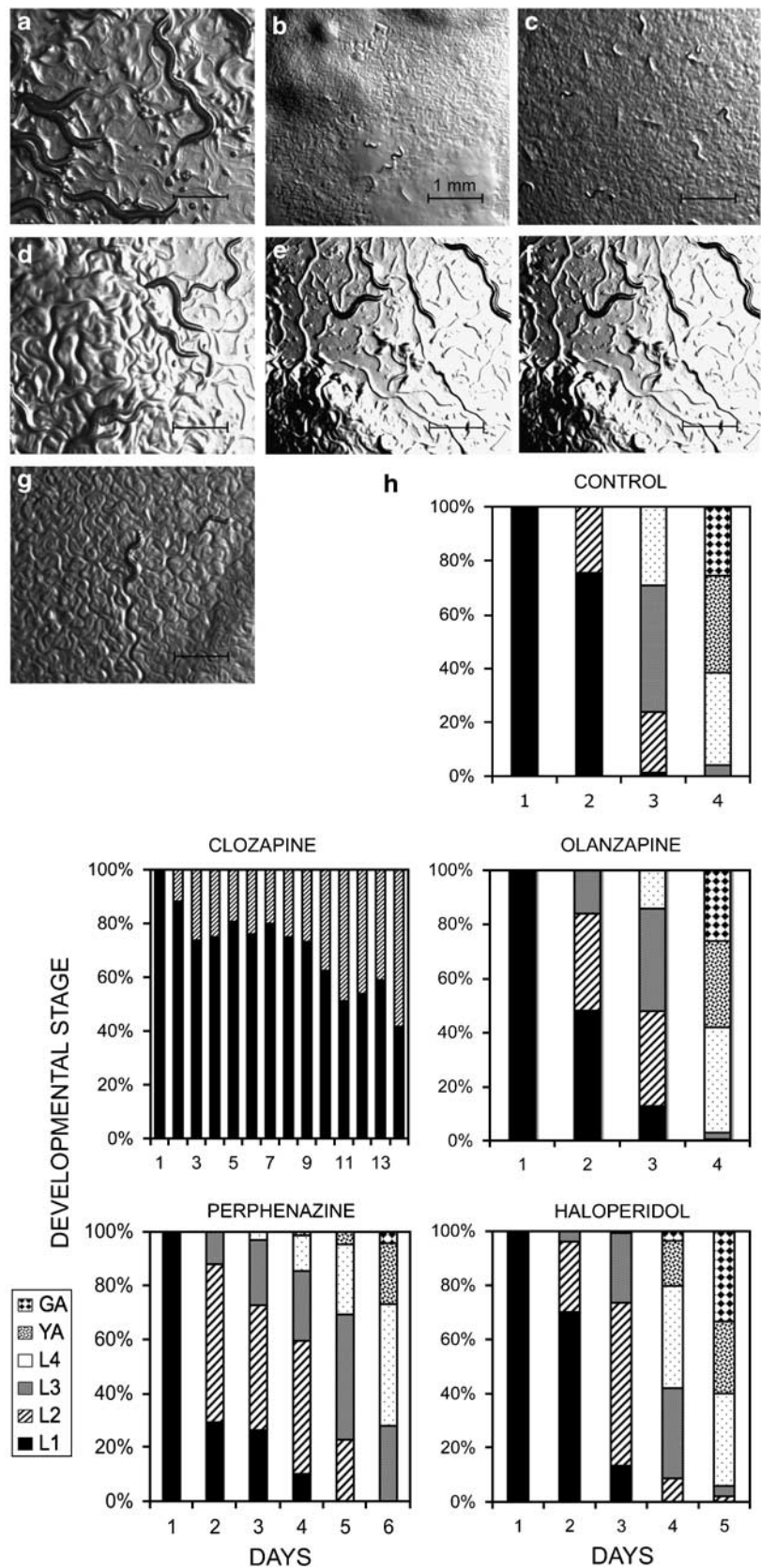
We quantified the effects of clozapine on the development of *C. elegans* by performing dose-response and time-course studies. Larval arrest with exposure to clozapine was dose-dependent. By day 12, N2 larvae exposed to 125  $\mu$ g/ml clozapine had developed on to adulthood. N2 larvae exposed to 150  $\mu$ g/ml clozapine had intermediate results with some worms reaching the L3 larval stage, but no larvae developing into adults (Figure 2). There was complete L1–L2 larval arrest with exposure to clozapine concentrations of 175  $\mu$ g/ml or greater (Figure 2). We also tested the effect of the clozapine metabolite *N*-desmethyl clozapine on larval development, because this metabolite has been hypothesized to play a major role in the therapeutic effects of clozapine (Sur *et al.*, 2003; Weiner *et al.*, 2004). We observed larval arrest with *N*-desmethyl clozapine at 200  $\mu$ g/ml (Figure 1c). Exposure to the highest soluble level we could achieve with haloperidol in 1% ethanol (50  $\mu$ g/ml) did not result in larval arrest (Figure 1d and h). Clinically, haloperidol is used at doses more than an order of magnitude lower than clozapine. Nonetheless, to achieve concentrations similar to that of clozapine, we also conducted studies with 200  $\mu$ g/ml haloperidol, although this necessitated a four-fold higher final concentration of ethanol for solubility. No larval arrest was seen with haloperidol in this condition. We conducted similar studies with the atypical antipsychotic drug olanzapine, which, among the available antipsychotic drugs, is structurally most similar to clozapine, and with the typical antipsychotic drug perphenazine at similar concentrations. We did not observe larval arrest with either of those widely used antipsychotics (Figure 1e, f, and h).

These larval arrest studies were performed with clozapine exposure initiated in the embryonic state. To study the nature of the larval arrest further, we examined whether clozapine-induced larval arrest resulted only from exposure prior to the L1 stage or whether developmental arrest could be induced in later larval stages as well. Larvae were staged based on known growth rates at 20°C and physical

**Figure 1** Clozapine induces larval arrest in *C. elegans*. Representative photographs of larval development, at  $\times 30$  magnification (a–g). (a) N2 worms exposed to 1% ethanol for 4 days. Adult worms and their eggs are seen. (b) N2 worms exposed to 200  $\mu$ g/ml clozapine for 10 days. All worms are arrested at L1–L2 stages. (c) N2 worms exposed to 200  $\mu$ g/ml *N*-desmethyl clozapine for 10 days. All worms are arrested at L1–L2 stages. (d) N2 worms exposed to 50  $\mu$ g/ml haloperidol for 5 days. Adult worms and eggs are seen. (e) N2 worms exposed to 200  $\mu$ g/ml olanzapine for 5 days. Adult worms and eggs are seen. (f) N2 worms exposed to 200  $\mu$ g/ml perphenazine for 5 days. Adult worms are seen. (g) *age-1(hx546)* worms exposed to 200  $\mu$ g/ml clozapine for 7 days. Worms are no longer arrested in the larval stages, and adult worms are seen. (h) Time course of development for N2 worms with exposure to 1% ethanol, haloperidol, perphenazine, olanzapine or clozapine. Abbreviations: YA = young adult; GA = gravid adult.

characteristics. We exposed separate populations of L1, L2, L3, and L4 larvae to clozapine (Supplementary Figure 1). Exposing L1 larvae to clozapine resulted in complete larval

arrest. Most L1 larvae exposed to clozapine arrested development at the L1 stage, although a few progressed to the L2 stage and then either arrested development or died.



We observed a significantly higher mortality rate in L2 larvae exposed to clozapine than those exposed as eggs or as L1 larvae, but they did not arrest. L3 larvae exposed to clozapine did not undergo developmental arrest, although their growth was delayed and many of these worms died as young adults. The worms that did manage to reach gravid adulthood became bags of worms. L4 larvae exposed to clozapine developed to gravid adulthood and successfully laid eggs. In summary, clozapine-induced arrest occurs primarily at the L1 stage. Once a worm enters the L3 larval stage, clozapine exposure slows the rate of development and increases mortality but does not cause complete arrest.

We determined the tissue levels of clozapine and its active metabolite *N*-desmethyl clozapine using HPLC to compare the drug levels in the worms with tissue levels observed in patients. We found that worms exposed to 200 µg/ml of clozapine had total clozapine and *N*-desmethyl clozapine concentrations of 18.02 µg/ml (17.2 µg/ml clozapine and 0.82 µg/ml of *N*-desmethyl clozapine). Average serum levels of clozapine and *N*-desmethyl clozapine in patients taking clozapine have been reported to be  $460 \pm 245$  ng/ml, with average clozapine levels of  $265 \pm 143$  ng/ml and *N*-desmethyl clozapine levels of  $194 \pm 117$  ng/ml (Centorrino *et al*, 1996). It should be noted that these are serum levels, and the brain levels of clozapine and *N*-desmethyl clozapine are expected to be higher, given the lipophilic properties of clozapine. Measurements of serum and brain levels of clozapine in rats have shown that the brain and serum levels are closely correlated, but there is a 24-fold higher concentration of clozapine in the brain (Baldessarini *et al*, 1993). Hence, the levels that one would expect in human brains based on these studies ( $\sim 11$  µg/ml) is very close to the levels that we found in the worm tissue (18.02 µg/ml).

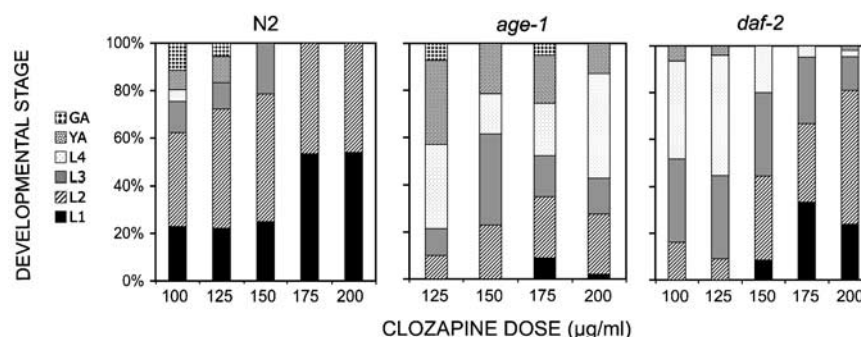
### *age-1* Mutants Suppress Clozapine-induced Larval Arrest

Given the putative roles of dopaminergic and serotonergic systems in the pathogenesis of schizophrenia and known interactions between clozapine and these neurotransmitter systems, we initially studied worms deficient in dopamine and/or serotonin to see if such mutants suppressed clozapine-induced larval arrest (Gardner *et al*, 2005). We tested the mutants *cat-2(e1112)*, which has a mutation in the dopamine biosynthetic enzyme tyrosine hydroxylase, *tph-1*

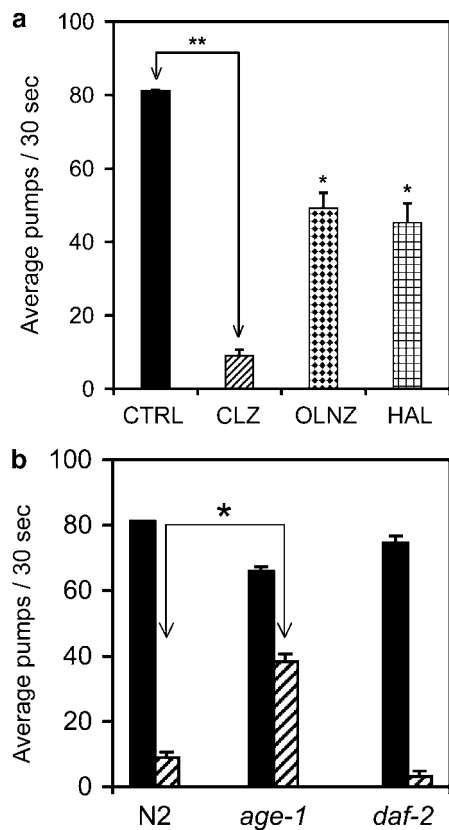
(*mg280*), which has a mutation in the serotonin biosynthetic enzyme tryptophan hydroxylase, *bas-1(ad446)*, which has a mutation in the serotonin and dopamine biosynthetic enzyme aromatic amino acid decarboxylase, and *cat-4(e1141)*, which has a mutation in the serotonin and dopamine biosynthetic enzyme GTP cyclohydrolase I. Hundred per cent of these mutant worms were arrested in the L1–L2 stage in the presence of clozapine. We then examined worms with mutations in various other neurotransmitter and signal transduction systems to find mutants that suppressed clozapine-induced larval arrest.

*Age-1*(*hx546*) worms, which contain a mutation in phosphatidylinositol 3-kinase (PI3K), suppressed clozapine-induced larval arrest (Figures 1g and 2). In the absence of the antipsychotics, these mutants grow to adulthood along the same time course as N2 worms (Supplementary Figure 2). A delay in growth was observed in *age-1* worms exposed to clozapine, but these mutants developed through all larval stages into adulthood and laid eggs (Figures 1g and 2). This effect seen with *age-1* was dose-dependent (Figure 2). For example, on exposure to a lower concentration of clozapine (100 µg/ml), about 60% of N2 worms were L1 or L2 on day 12, whereas all animals had reached adulthood on the *age-1* plates. To confirm the involvement of these genes in suppression of clozapine-induced larval arrest, we studied another available *age-1* allele *hx542* and found similar suppression of larval arrest (Supplementary Figure 3). We also found that *daf-2(e1370)* animals, which contain a mutation in the insulin/IGF-1 receptor, partially suppressed clozapine-induced larval arrest, growing beyond the early larval stages, but not to adulthood at 200 µg/ml clozapine (Figure 2). Similar results were seen with three other *daf-2* alleles (*e1370*, *m41*, *m577*) (Supplementary Figure 3).

*C. elegans* larvae can enter an alternative dauer developmental stage during unfavorable environmental conditions (Riddle *et al*, 1997). We considered the possibility that clozapine could be forcing the worms to enter the dauer stage. Dauer worms can survive harsh conditions and live for extended periods of time. Dauer larvae can be recovered by resistance to treatment with 1% SDS (sodium dodecyl sulfate). We treated the clozapine-arrested worms with 1% SDS and found that none of the worms had entered dauer stage. Dauer arrest is affected by multiple pathways, including the insulin-signaling pathway, the TGF-β



**Figure 2** Larval arrest induced by clozapine is dose-dependent. The percentages of worms at different developmental stages are shown for the wild-type N2 worms and the mutants *age-1*(*hx546*) and *daf-2*(*e1370*) after 12 days of exposure at different dosages of clozapine. For *age-1* mutants, data for 100 µg/ml of clozapine are not shown because all animals had reached adulthood.

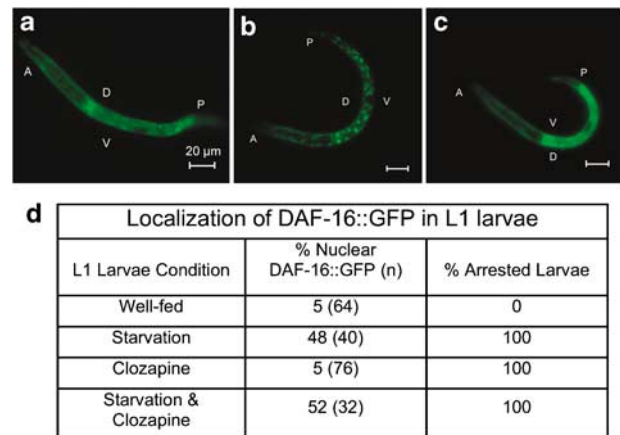


**Figure 3** Effect of clozapine on pharyngeal pumping. (a) Pharyngeal pumping of wild-type L1 larvae after exposure to 1% ethanol ( $n=40$ ), 200  $\mu\text{g}/\text{ml}$  clozapine ( $n=40$ ), 50  $\mu\text{g}/\text{ml}$  haloperidol ( $n=20$ ), and 100  $\mu\text{g}/\text{ml}$  olanzapine ( $n=20$ ) for 24 h. (b) Pharyngeal pumping of L1 larvae in N2 ( $n=90$ ), *age-1*(*hx546*) ( $n=40$ ), and *daf-2*(*e1370*) ( $n=20$ ) worms after exposure to 1% ethanol and in N2 ( $n=70$ ), *age-1*(*hx546*) ( $n=40$ ), and *daf-2*(*e1370*) ( $n=20$ ) worms after exposure to 200  $\mu\text{g}/\text{ml}$  of clozapine for 24 h. Error bars represent SEM. \* and \*\* denote statistical significance.

pathway, a guanylate cyclase pathway, and a steroid hormone pathway. We tested mutations in the TGF- $\beta$  ligand *daf-7* and the TGF- $\beta$  receptor *daf-4*, but saw no suppression of clozapine-induced larval arrest. We also tested the guanylate cyclase pathway mutants *daf-11*, *tax-2*, and *tax-4* and the steroid hormone pathway mutant *daf-9* (Supplementary Figure 4). None of these mutants suppressed clozapine-induced larval arrest. These studies suggest that clozapine acts through a limited number of specific pathways to effect larval arrest.

### Clozapine Inhibits Pharyngeal Pumping

We tested whether clozapine produced larval arrest by inhibiting pharyngeal pumping in the larvae, thereby causing starvation. We found that exposure to clozapine resulted in a significant inhibition of pharyngeal pumping in N2 L1 larvae, much more pronounced than seen with haloperidol or olanzapine (Figure 3a). It should be noted that we had studied haloperidol at 50  $\mu\text{g}/\text{ml}$  and olanzapine at 100  $\mu\text{g}/\text{ml}$ , their respective highest solubilities in ethanol, but we had used 200  $\mu\text{g}/\text{ml}$  clozapine. To ensure that effects on pharyngeal pumping were not missed with haloperidol and olanzapine due to the lower dosage, we studied haloperidol and olanzapine at 200  $\mu\text{g}/\text{ml}$  by dissolving them



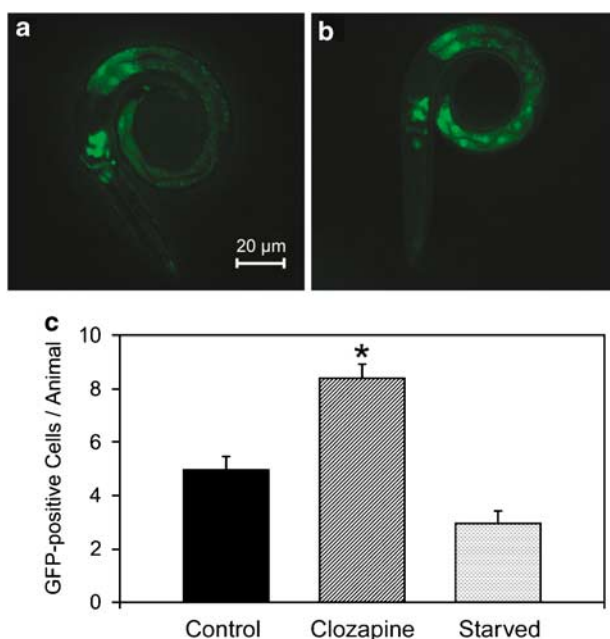
**Figure 4** Clozapine and starvation have different effects on DAF-16 localization. Nuclear vs cytoplasmic localization of the fork head transcription factor DAF-16 in *zls356*[DAF-16::GFP] worms, at  $\times 200$  magnification. (a) Well-fed L1 larvae show cytoplasmic localization of DAF-16::GFP. (b) Starvation-arrested L1 larvae show nuclear accumulation of DAF-16::GFP. (c) Clozapine-arrested L1 larvae show cytoplasmic localization of DAF-16::GFP. (d) Quantification of nuclear DAF-16::GFP levels.

in DMSO. Even at the higher concentrations, the degree of inhibition of pharyngeal pumping was several fold less than seen with clozapine. We then tested pharyngeal pumping in mutants to see if the same mutants that escaped larval arrest could also suppress clozapine-induced inhibition of pharyngeal pumping. We found that *age-1* mutations partially rescued clozapine-induced inhibition of pharyngeal pumping in L1 larvae (Figure 3b). It is possible that decreased pharyngeal pumping contributes to the arrest seen with clozapine and that reversal of this defect may contribute to the suppression of arrest by *age-1* mutants. However, *daf-2* mutants, which partially rescue clozapine-induced larval arrest, do not rescue clozapine-induced inhibition of pharyngeal pumping in L1 larvae (Figure 3b). Hence, inhibition of pharyngeal pumping is not likely to be the sole reason for clozapine-induced larval arrest. We also sought to examine if *eat* mutants, which have reduced pharyngeal pumping at baseline, have increased sensitivity to clozapine. We performed dose-response experiments on two *eat* mutants, *eat-7* (also known as *egl-4*) and *eat-12* (also known as *egl-19*). Both of these strains display increased sensitivity to clozapine at an intermediate dose of 100  $\mu\text{g}/\text{ml}$ , consistent with the notion that clozapine-induced inhibition of pharyngeal pumping contributes to larval arrest (Supplementary Figure 5).

### Clozapine's Effects on the Insulin-Signaling Pathway

One downstream effect of PI3K/AGE-1 in *C. elegans* is phosphorylation and inhibition of the FOXO transcription factor DAF-16 (Ogg et al, 1997; Mukhopadhyay et al, 2006). When *C. elegans* larvae are starved, the PI3K/AGE-1 pathway is inactivated, resulting in the nuclear translocation and activation of DAF-16. Such starvation leads to L1 arrest of the larvae (Baugh and Sternberg, 2006). By comparison, activation of the insulin-signaling pathway results in cytoplasmic localization of DAF-16. We undertook studies to see how clozapine affected the





**Figure 5** Clozapine induces AGE-1 in intestinal cells. AGE-1::GFP expression in sEx10837 (*age-1*::GFP) worms under different conditions, at  $\times 200$  magnification. (a) AGE-1::GFP expression in L1 larvae exposed to 1% ethanol for 24 h. (b) AGE-1::GFP expression in L1 larvae exposed to 200 µg/ml of clozapine for 24 h. (c) Quantification of AGE-1::GFP-positive cells ( $N = 10$  for each condition). \* denotes statistical significance.

nuclear/cytoplasmic localization of DAF-16, using worms containing an integrated *daf-16*::GFP marker. Compared with starvation, exposure to clozapine elicited very different results. Although DAF-16 was localized in the nucleus in larvae arrested due to starvation, it was localized in the cytoplasm in larvae arrested due to clozapine exposure (Figure 4). Heat-shocked worms showed results identical to those observed with the starved larvae (data not shown). Our findings of cytoplasmic localization of DAF-16::GFP in clozapine-arrested larvae indicates that clozapine is not inducing larval arrest by inhibiting the insulin-signaling pathway.

Cytoplasmic localization of DAF-16::GFP in clozapine-arrested larvae is consistent with the possibility that clozapine could be activating the insulin-signaling pathway. We tested whether exposure to clozapine induced the expression of AGE-1 by studying transgenic worms expressing AGE-1::GFP in the presence of clozapine. Clozapine exposure did not cause a change in AGE-1::GFP expression in the amphids and head neurons, but increased AGE-1::GFP signal in intestinal cells (Figure 5). This finding suggests that clozapine may induce the expression of AGE-1 in certain cellular contexts.

A recent study involving *age-1* mutant suppressors revealed that there is more than one pathway for phospholipid-dependent kinases and that there are different separable larval and adult outputs of AGE-1 (Gami et al, 2006). We tested whether clozapine may influence a PI3K pathway distinct from the canonical PI3K-AKT-DAF-16 pathway. Consistent with this hypothesis, mutations in *pdh-1* and *daf-16* did not affect clozapine-induced larval arrest. Similarly, neither an *akt-1* mutant nor an *akt-2* mutant rescued clozapine-induced larval arrest in our studies. We

could not test an *akt-1*; *akt-2* double mutant because *akt-1*; *akt-2* double mutants result in dauer arrest, as is also seen in worms with concurrent RNAi inhibition of both *akt-1* and *akt-2* (Paradis and Ruvkun, 1998; Hertweck et al, 2004; Oh et al, 2005).

In summary, we report a developmental phenotype of early L1–L2 larval arrest that is specific for clozapine vis-à-vis other antipsychotics. Our studies suggest that clozapine-induced larval arrest is mediated by activation of the insulin-signaling pathway in *C. elegans*, because (1) mutations in *age-1* and *daf-2* suppress clozapine-induced larval arrest; (2) clozapine produces cytoplasmic localization of DAF-16::GFP in arrested L1 larvae; and (3) clozapine induces increased expression of AGE-1::GFP.

## DISCUSSION

### Clozapine Induces Larval Arrest in *C. elegans*

Worms develop through four postembryonic larval stages before reaching adulthood (Riddle et al, 1997). Clozapine, but not other representative antipsychotic drugs including haloperidol, perphenazine and olanzapine, arrests worms in the early larval stages. In the presence of clozapine, wild-type embryos hatch but do not grow beyond L1–L2. Our results suggest that clozapine-induced larval arrest is not due to nonspecific toxicity, but is a specific effect on development that is exclusive to the L1 and L2 larval stages. Thus, the developmental effect of clozapine reported here is a fundamentally different phenomenon than the general slowing of growth reported with lower doses of antipsychotic drugs (Donohoe et al, 2006). The effect of 200 µg/ml clozapine is stage-specific and results in frank arrest, not just a delay in development.

*C. elegans* larvae arrest development as dauers when they encounter unfavorable conditions (Riddle et al, 1997). We tested the possibility that clozapine was activating the dauer pathway using recovery of dauer worms through selection with 1% SDS. Our results show that clozapine-induced larval arrest does not involve entry into the dauer stage. In addition, we tested animals with mutations in pathways that regulate entry into the dauer stage. Only mutants within the insulin-signaling pathway suppressed clozapine-induced larval arrest.

### Clozapine-Induced Larval Arrest is Suppressed by *age-1* Mutants

PI3K is well-conserved between mammals and *C. elegans*. DAF-2, the *C. elegans* homolog of insulin/IGF-1 receptors in humans, activates AGE-1/PI3K that transduces signals downstream to regulate growth and metabolism. In our study, mutant *age-1* worms grew to adulthood in the presence of clozapine, whereas *daf-2* mutations partially suppressed clozapine-induced larval arrest (Figure 2 and Supplementary Figure 3). As *daf-2* mutants partially suppress clozapine-induced larval arrest but do not suppress clozapine-induced inhibition of pharyngeal pumping, suppression of clozapine-induced inhibition of pharyngeal pumping is not necessary for suppression of larval arrest. The finding that suppression of the pharyngeal pumping effect is not necessary for escape from

clozapine-induced larval arrest does not exclude the possibility that decreased pharyngeal pumping may still contribute to clozapine-induced larval arrest. Inhibition of pharyngeal pumping and the resulting starvation are known to cause larval arrest. For example, mutants deficient in synaptic vesicle release, such as the synaptotagmin mutant *snt-1*, cause larval arrest by inhibition of pharyngeal pumping (Raizen *et al*, 1995). We find that clozapine causes an even more dramatic reduction of fluorescent bead uptake into the gut than *snt-1* mutations (data not shown), though our DAF-16 localization results argue against starvation being the sole reason for clozapine-induced larval arrest. Clozapine may produce larval arrest through combined effects on parallel pathways, of which reduced pharyngeal pumping could be one.

The insulin-signaling pathway regulates dauer formation and aging in *C. elegans*. (Mukhopadhyay *et al*, 2006). Consistent with these findings, it has been reported that the insulin-signaling pathway specifically regulates L1 arrest induced by stressors such as starvation or high temperature (Baugh and Sternberg, 2006). It was shown that L1 larval arrest due to starvation is mediated by inhibition of the insulin-signaling pathway, resulting in activation and nuclear localization of the FOXO transcription factor DAF-16 (Baugh and Sternberg, 2006). However, in worms that undergo larval arrest during exposure to clozapine, DAF-16 is localized in the cytoplasm (Figure 4c). Activation of the insulin-signaling pathway drives DAF-16 into the cytoplasm, whereas starvation drives DAF-16 into the nucleus. Therefore, at least two of clozapine's biological effects compete with regard to DAF-16 localization. Activation of the insulin-signaling pathway may produce multiple effects, including inhibition of pharyngeal pumping. Alternatively, clozapine-induced activation of the insulin-signaling pathway and inhibition of pharyngeal pumping may occur in parallel. Importantly, we find that clozapine does not induce L1 arrest by simply acting as a stressor, because clozapine activates the insulin-signaling pathway, whereas stressors such as starvation or high temperature inactivate the pathway. The larval arrest reported here occurs in a biological context unique to the pharmacological effects of clozapine, a context that appears to involve parallel pathways.

### Implications for the Effects of Clozapine on Humans

Given the conservation of the PI3K signaling pathways between *C. elegans* and humans, our results raise the possibility of an interaction between clozapine and PI3K pathways, including the insulin-signaling pathway, in mediating the effect(s) of clozapine in patients (Kalkman, 2006). Clozapine has uniquely superior therapeutic effects, even compared with the structurally similar antipsychotic olanzapine (Kumra *et al*, 2008). The molecular basis of clozapine's superior efficacy is not known. Although there has been much research focused on clozapine's effects on various neurotransmitter systems, there have been no definitive findings that explain clozapine's unique therapeutic and side effect profiles (Brunello *et al*, 1995). From a therapeutic standpoint, the potential for clozapine to modulate cerebral and peripheral glucose metabolism through the PI3K pathway would be of great clinical

interest. Recent studies have pointed to a possible role of brain glucoregulatory processes in the pathophysiology of schizophrenia (Cohen *et al*, 1997; Chen *et al*, 2000; Clark *et al*, 2001; Fan *et al*, 2006; Holmes *et al*, 2006; Zhao *et al*, 2006; Venkatasubramanian *et al*, 2007). These studies had also suggested a unique effect of clozapine on cellular energy metabolism (Cohen *et al*, 1997). Our finding that clozapine alone among antipsychotic drugs tested induces larval arrest through the PI3K pathway may be mechanistically relevant in this regard.

A major side effect of clozapine is the induction of metabolic abnormalities and diabetes mellitus (Jin *et al*, 2002). The mechanism underlying the onset of diabetes is not clear (Wirshing *et al*, 1999). Interaction of clozapine with the PI3K pathway points to a possible mechanism for clozapine-induced metabolic effects. Indeed, the therapeutic effects and the metabolic side effects of clozapine may be related (Girgis *et al*, 2008). Although activation of the PI3K pathway in the brain may be therapeutic for psychiatric disorders, activation of the same pathway in other tissues may contribute to adverse metabolic effects. *C. elegans* has only one insulin receptor isoform but humans have two isoforms, HIR-A and HIR-B. The expression of these two isoforms varies by tissue—neurons express only HIR-A, liver expresses predominantly HIR-B, whereas adipose tissue and skeletal muscle express both isoforms (Sesti *et al*, 2001). By targeting HIR-A *vis-à-vis* HIR-B, it may be possible to develop therapeutic approaches that capitalize on the role of the insulin-signaling pathway in neurons while minimizing effects on other tissues that could be contributing to metabolic side effects. Alternatively, targeting the PI3K pathway downstream of the insulin receptor may have therapeutic value. In addition, discovery of clozapine's effect on developmental pathways may have implications for understanding clozapine's unique and problematic side effect of agranulocytosis. It has been shown that the clozapine metabolite *N*-desmethyl clozapine suppresses the development of hematopoietic precursors of myeloid and erythroid lineages (Gerson *et al*, 1994). Examination of clozapine's modulation of the PI3K pathway in the context of hematopoietic development would be worthwhile.

An interaction between clozapine and PI3K/AGE-1 is also interesting in the context of recent human genetic studies pointing to an association between AKT-1 and schizophrenia (Emamian *et al*, 2004; Arguello and Gogos, 2008). That study reported an association of schizophrenia with an AKT-1 haplotype that led to lower AKT-1 protein levels (Emamian *et al*, 2004). It has been observed that there is a decrease in AKT-1 levels in peripheral lymphocytes and brain of patients with schizophrenia (Emamian *et al*, 2004). Another study found that an AKT1 variant was associated with increased risk for schizophrenia and showed that AKT1 played a role in prefrontal-striatal structure and function in humans (Tan *et al*, 2008). These observations are also interesting in the context of reports of a decreased incidence of cancer in patients with schizophrenia as well as in their first-degree relatives (Lichtermann *et al*, 2001). Reports of a decrease in lung cancer incidence are especially remarkable in light of the high prevalence of cigarette smoking in patients with schizophrenia (Dervaux and Laqueille, 2008). PI3K-AKT-signaling pathway is one of the most commonly mutated systems in human cancers



(Engelman *et al*, 2006). It is possible that patients with schizophrenia have decreased basal activity of the PI3K-AKT signaling activity that makes them less susceptible to carcinogenesis, but more susceptible to deficits in the nervous system.

There are limitations to the experiments described here and to the generalization of results obtained in *C. elegans* to humans or other mammals. Identity of binding sites, either for drugs or neurotransmitters, has not been characterized in detail across species. Dosing of drugs by application in the media does not allow for tight control of drug levels in tissue and does not assure that these levels are similar to those attained in other organisms or model systems. The concentrations of drugs used in our studies were higher than those administered to humans, because high concentrations are required for penetration of the *C. elegans* cuticle. However, measurements of clozapine and *N*-desmethyl clozapine in our study showed that the tissue levels are close to those expected in human brains. With these caveats, we report the finding of a clozapine-specific developmental arrest that is suppressed by mutations in PI3K and that may have implications for understanding the unique effects of clozapine and for the development of novel therapeutic approaches to psychosis.

As a result of these findings, we have initiated a genome-wide RNA interference screen to identify and characterize other genes and pathways that are involved in clozapine's developmental effects in *C. elegans*. In addition, studies in rodent and other mammalian systems would be the next logical step. The ability to correlate PI3K effects of clozapine to behaviors or side effects will be complicated by the lack of validated rodent or other mammalian models for antipsychotic efficacy or side effects. An example of a possible follow-up study would be to determine if neuron-specific insulin receptor knockout mice show alterations in clozapine-induced behaviors such as facilitation of prepulse inhibition. In addition, one might study the effects of clozapine in surrogate tissues (ie, lymphocytes or fibroblasts) in patients with schizophrenia treated with clozapine. By studying PI3K activity in such tissues before and after clozapine treatment, one might be able to observe direct effects of clozapine on the PI3K pathway and could obtain data on how effects on PI3K activity correlate with the therapeutic or side effects of clozapine in patients. Such studies are beyond the scope of our experiments in *C. elegans*, but do illustrate how our findings in a nematode model system might lead to the identification of potentially important drug targets in other species.

## ACKNOWLEDGEMENTS

The work was supported by the Adam Corneel Young Investigator Award, American Psychiatric Association/Pfizer Research Fellowship, Harvard Medical School DuPont-Warren Fellowship and Livingston Fellowship to Rakesh Karmacharya, an NIH Clinical Scientist Development Award, a Bernhard Foundation grant and a NARSAD Young Investigator Award to Edgar A. Buttner, and a Stanley Medical Research Institute Center grant to Bruce M. Cohen. We thank Dr. Thomas Cooper at the Nathan Kline Institute in New York for assistance with the measurement

of tissue clozapine levels, Dr. Mark Alkema at the University of Massachusetts, Worcester, MA, for assistance with integration of *age-1::GFP*, Lauraine Dalton for assistance with figures, and Theresa Stiernagle at the *C. elegans* Genetics Center for worm strains used in this work.

## DISCLOSURE/CONFLICT OF INTEREST

R.F.S. is listed as a co-inventor on several patent applications with AstraZeneca, though no compensation has been received, nor anticipated in the near future, and the patent applications have no relevance to work presented in this paper. Beyond that, the authors declare that, except for income received from the primary employers, no financial support or compensation has been received from any individual or corporate entity over the past 3 years for research or professional service and there are no personal financial holdings that could be perceived as constituting a potential conflict of interest.

## REFERENCES

- Ambros V (2001). microRNAs: tiny regulators with great potential. *Cell* 28: 823–826.
- Arguello PA, Gogos JA (2008). A signaling pathway AKTing up in schizophrenia. *J Clin Invest* 118: 2018–2021.
- Arnt J, Skarsfeldt T (1998). Do novel antipsychotics have similar pharmacological characteristics? A review of the evidence. *Neuropsychopharm* 18: 63–101.
- Baldessarini RJ, Centorrino F, Flood JG, Volpicelli SA, Huston Lyons D, Cohen BM (1993). Tissue concentrations of clozapine and its metabolites in the rat. *Neuropsychopharm* 9: 117–124.
- Bargmann CI (1998). Neurobiology of the *Caenorhabditis elegans* genome. *Science* 282: 2028–2033.
- Baugh LR, Sternberg PW (2006). DAF-16/FOXO regulates transcription of cki-1/Cip/Kip and repression of lin-4 during *C. elegans* L1 arrest. *Curr Biol* 16: 780–785.
- Bettinger JC, Carnell L, Davies AG, McIntire SL (2004). The use of *Caenorhabditis elegans* in molecular neuropharmacology. *Int Rev Neurobiol* 62: 195–212.
- Brar JS, Chengappa KN, Parepally H, Sandman AR, Kreinbrook SB, Sheth SA *et al* (1997). The effects of clozapine on negative symptoms in patients with schizophrenia with minimal positive symptoms. *Ann Clin Psychiatry* 9: 227–234.
- Brunello N, Masotto C, Steardo L, Markstein R, Racagni G (1995). New insights into the biology of schizophrenia through the mechanism of action of clozapine. *Neuropsychopharm* 13: 177–213.
- Carpenter WT, Koenig JI (2008). The evolution of drug development in schizophrenia: past issues and future opportunities. *Neuropsychopharm* 33: 2061–2079.
- Centorrino F, Baldessarini RJ, Frankenburg FR, Kando J, Volpicelli SA, Flood JG (1996). Serum levels of clozapine and norclozapine in patients treated with selective serotonin reuptake inhibitors. *Am J Psychiatry* 153: 820–822.
- Chen RY, Chen E, Ho WY (2000). A five-year longitudinal study of the regional cerebral metabolic changes of a schizophrenic patient from the first episode using Tc-99m HMPAO SPECT. *Eur Arch Psychiatry Clin Neurosci* 250: 69–72.
- Choy RK, Kemner JM, Thomas JH (2006). Fluoxetine-resistance genes in *Caenorhabditis elegans* function in the intestine and may act in drug transport. *Genetics* 172: 885–892.
- Choy RK, Thomas JH (1999). Fluoxetine-resistant mutants in *C. elegans* define a novel family of transmembrane proteins. *Mol Cell* 3: 143–152.

- Clark C, Kopala L, Li DK, Hurwitz T (2001). Regional cerebral glucose metabolism in never-medicated patients with schizophrenia. *Can J Psychiatry* 46: 340–345.
- Cohen RM, Nordahl TE, Semple WE, Andreason P, Litman RE, Pickar D (1997). The brain metabolic patterns of clozapine- and fluphenazine-treated patients with schizophrenia during a continuous performance task. *Arch Gen Psychiatry* 54: 481–486.
- Davies AG, Pierce-Shimomura JT, Kim H, VanHoven MK, Thiele TR, Bonci A *et al* (2003). A central role of the BK potassium channel in behavioral responses to ethanol in *C. elegans*. *Cell* 115: 655–666.
- Davis JR, Li Y, Rankin CH (2008). Effects of developmental exposure to ethanol on *Caenorhabditis elegans*. *Alcohol Clin Exp Res* 32: 853–867.
- Dervaux A, Laqueille X (2008). Smoking and schizophrenia: epidemiological and clinical features. *Encephale* 34: 299–305.
- Donohoe DR, Aamodt EJ, Osborn E, Dwyer DS (2006). Antipsychotic drugs disrupt normal development in *Caenorhabditis elegans* via additional mechanisms besides dopamine and serotonin receptors. *Pharm Res* 54: 361–372.
- Emamian ES, Hall D, Birnbaum MJ, Karayiorgou M, Gogos JA (2004). Convergent evidence for impaired AKT1-GSK3 $\beta$  signaling in schizophrenia. *Nat Genet* 36: 131–137.
- Engelman JA, Luo J, Cantley LC (2006). The evolution of phosphatidyl 3-kinases as regulators of growth and metabolism. *Nat Rev Genet* 7: 606–619.
- Fan X, Liu E, Pristach C, Goff DC, Henderson DC (2006). Higher fasting serum insulin levels are associated with a better psychopathology profile in acutely ill non-diabetic inpatients with schizophrenia. *Schiz Res* 86: 30–35.
- Fire A, Xu S, Montgomery MK, Kostas SA, Driver SE, Mello CC (1998). Potent and specific genetic interference by double-stranded RNA in *Caenorhabditis elegans*. *Nature* 391: 806–811.
- Freedman R (2005). The choice of antipsychotic drugs for schizophrenia. *N Engl J Med* 353: 1286–1288.
- Gami MS, Iser WB, Hanselman KB, Wolkow CA (2006). Activated AKT/PKB signaling in *C. elegans* uncouples temporally distinct outputs of DAF-2/insulin-like signaling. *BMC Dev Biol* 6: 45.
- Gardner DM, Baldessarini RJ, Waraich P (2005). Modern antipsychotic drugs: a critical overview. *Can Med Assoc J* 172: 1703–1711.
- Gerson SL, Arce C, Meltzer HY (1994). N-desmethylclozapine: a clozapine metabolite that suppresses haemopoiesis. *Br J Haematol* 86: 555–561.
- Girgis RR, Javitch JA, Lieberman JA (2008). Antipsychotic drug mechanisms: links between therapeutic effects, metabolic side effects and the insulin signaling pathway. *Mol Psychiatry* 13: 918–929.
- Hengartner MO, Horvitz HR (1994). Programmed cell death in *Caenorhabditis elegans*. *Curr Opin Genet Dev* 4: 581–586.
- Hertweck M, Gobel C, Baumeister R (2004). *C. elegans* SGK-1 is the critical component in the Akt/PKB kinase complex to control stress response and life span. *Dev Cell* 6: 577–588.
- Holmes E, Tsang TM, Huang JT-J, Leweke FM, Koethe D, Gerth CW *et al* (2006). Metabolic profiling of CSF: evidence that early intervention may impact on disease progression and outcome in schizophrenia. *PLoS Med* 3: 1420–1428.
- Horvitz HR (1999). Genetic control of programmed cell death in the nematode *Caenorhabditis elegans*. *Cancer Res* 59: 1701s–1706s.
- Horvitz HR, Sternberg PW (1991). Multiple intercellular signalling systems control the development of the *Caenorhabditis elegans* vulva. *Nature* 351: 535–541.
- Jin H, Meyer JM, Jeste DV (2002). Phenomenology of and risk factors for new-onset diabetes mellitus and diabetic ketoacidosis associated with atypical antipsychotics: an analysis of 45 published cases. *Ann Clin Psychiatry* 14: 59–64.
- Kalkman HO (2006). The role of the phosphatidylinositol 3-kinase-protein kinase B pathway in schizophrenia. *Pharmacol Ther* 110: 117–134.
- Kane J, Honigfeld G, Singer J, Meltzer H (1988). Clozapine for the treatment-resistant schizophrenia. A double-blind comparison with chlorpromazine. *Arch Gen Psychiatry* 45: 789–796.
- Krupp P, Barnes P (1992). Clozapine-associated agranulocytosis: risk and aetiology. *Br J Psychiatry Suppl* 17: 38–40.
- Kumra S, Kranzler H, Gerbino-Rosen G, Kester HM, De Thomas C, Kafantaris V *et al* (2008). Clozapine and “high-dose” olanzapine in refractory early-onset schizophrenia: a 12-week randomized and double-blind comparison. *Biol Psychiatry* 63: 524–529.
- Lamberti JS, Olson D, Crilly JF, Olivares T, Williams GC, Tu X *et al* (2006). Prevalence of the metabolic syndrome among patients receiving clozapine. *Am J Psychiatry* 163: 1273–1276.
- Lee S, McIntire SL (2006). Chronic effects of ethanol in *C. elegans*. 16th International *C. elegans* meeting, 520B.
- Lichtermann D, Ekelund J, Pukkala E, Tanskanen A, Lönnqvist J (2001). Incidence of cancer among persons with schizophrenia and their relatives. *Arch Gen Psychiatry* 58: 573–578.
- Lieberman JA, Stroup TS, McEvoy JP, Swartz MS, Rosenheck RA, Perkins DO *et al* (2005). Effectiveness of antipsychotic drugs in patients with chronic schizophrenia. *N Engl J Med* 353: 1209–1223.
- Lindenmayer JP, Iskander A, Park M, Aperi FS, Czobor P, Smith R *et al* (1998). Clinical and neurocognitive effects of clozapine and risperidone in treatment-refractory schizophrenic patients: a prospective study. *J Clin Psychiatry* 59: 521–527.
- McKay SJ, Johnsen R, Khattra J, Asano J, Bailie DL, Chan S *et al* (2003). Gene expression profiling of cells, tissues, and developmental stages of the nematode *C. elegans*. *Cold Spring Harb Symp Quant Biol* 68: 159–170.
- Meltzer HY, McGurk SR (1999). The effects of clozapine, risperidone, and olanzapine on cognitive function in schizophrenia. *Schizophr Bull* 25: 233–255.
- Mukhopadhyay A, Oh SW, Tissenbaum HA (2006). Worming pathways to and from DAF-16/FOXO. *Exp Gerontol* 41: 928–934.
- Ogg S, Paradis S, Gottlieb S, Patterson GI, Lee L, Tissenbaum HA *et al* (1997). The fork head transcription factor DAF-16 transduces insulin-like metabolic and longevity signals in *C. elegans*. *Nature* 389: 994–999.
- Oh SW, Mukhopadhyay A, Svrzikapa N, Jiang F, Davis RJ, Tissenbaum HA (2005). JNK regulates lifespan in *Caenorhabditis elegans* by modulating nuclear translocation of forkhead transcription factor/DAF-16. *Proc Natl Acad Sci USA* 102: 4494–4499.
- Paradis S, Ruvkun G (1998). *Caenorhabditis elegans* Akt/PKB transduces insulin receptor-like signals from AGE-1 PI3-kinase to the DAF-16 transcription factor. *Genes Dev* 12: 2488–2498.
- Pierce SB, Costa M, Wisotzkey R, Devadhar S, Homburger SA, Buchman AR *et al* (2001). Regulation of DAF-2 receptor signaling by human insulin and *ins-1*, a member of the unusually large and diverse *C. elegans* insulin gene family. *Genes Dev* 15: 672–686.
- Raizen DM, Lee RY, Avery L (1995). Interacting genes required for pharyngeal excitation by motor neuron MC in *Caenorhabditis elegans*. *Genetics* 141: 1365–1382.
- Riddle DL, Blumenthal T, Meyer BJ, Priess JR (1997). *C. elegans II*. Cold Spring Harbor Laboratory Press, Cold Spring Harbor, NY.
- Ruvkun G (2001). Glimpses of a tiny RNA world. *Science* 294: 797–799.
- Sesti G, Federici M, Lauro D, Sbraccia P, Lauro R (2001). Molecular mechanism of insulin resistance in type 2 diabetes mellitus: role of the insulin receptor variant forms. *Diabetes Metab Res Rev* 17: 363–373.
- Sieburth D, Ch’ng Q, Dybbs M, Tavazoie M, Kennedy S, Wang D *et al* (2005). Systematic analysis of genes required for synapse structure and function. *Nature* 436: 510–517.

- Sur C, Mallorga PJ, Wittmann M, Jacobsen MA, Pascarella D, Williams JB *et al* (2003). N-desmethylozapine, an allosteric agonist at muscarinic 1 receptor, potentiates N-methyl-D-aspartate receptor activity. *Proc Natl Acad Sci USA* **100**: 13674–13679.
- Tan HY, Nicodemus KK, Chen Q, Li Z, Brooke JK, Honea R *et al* (2008). Genetic variation in AKT1 is linked to dopamine-associated prefrontal cortical structure and function in humans. *J Clin Invest* **118**: 2200–2208.
- Venkatasubramanian G, Chittiprol S, Neelakantachar N, Naveen MN, Thirthall J, Gangadhar BB *et al* (2007). Insulin and insulin-like growth factor-1 abnormalities in antipsychotic-naïve schizophrenia. *Am J Psychiatry* **164**: 1557–1660.
- Weiner DM, Meltzer HY, Veinbergs I, Donohue EM, Spalding TA, Smith TT *et al* (2004). The role of M1 muscarinic receptor agonism of N-desmethylozapine in the unique clinical effects of clozapine. *Psychopharm (Berlin)* **177**: 207–216.
- Weinshenker D, Garriga G, Thomas JH (1996). Genetic and pharmacological analysis of neurotransmitters controlling egg laying in *C. elegans*. *J Neurosci* **15**: 6975–6985.
- Wirshing DA, Wirshing WC, Kysar L, Berisford MA, Goldstein D, Pasdag J *et al* (1999). Novel antipsychotics: comparison of weight gain liabilities. *J Clin Psychiatry* **60**: 358–363.
- Zhao Z, Ksiezak-Reding H, Riggio S, Haroutunian V, Pasinetti GM (2006). Insulin receptor deficits in schizophrenia and in cellular and animal models of insulin receptor dysfunction. *Schiz Res* **84**: 1–14.

Supplementary Information accompanies the paper on the Neuropsychopharmacology website (<http://www.nature.com/npp>)